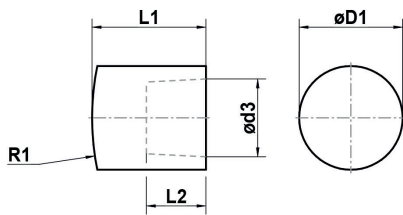


ELEKTRODENKAPPEN

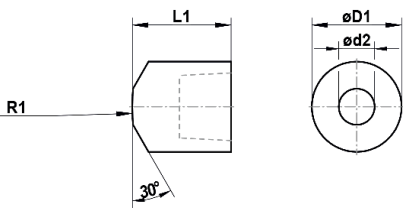
Elektrodenkappen nach ISO 5821

Form A



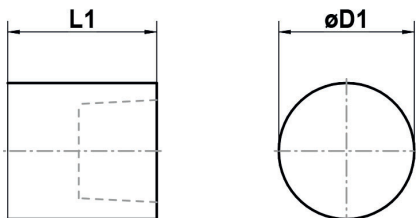
D1h11	d2	d3	l1	l2+0.5/-0	e	R1	R2
13		10	18	8		32	
16		12	20	9,5		40	
20		15	22	11,5		50	

Form B



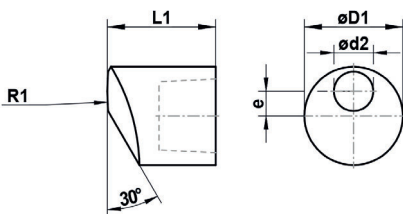
D1h11	d2	d3	l1	l2+0.5/-0	e	R1	R2
13	5	10	18	8		32	
16	6	12	20	9,5		40	
20	8	15	22	11,5		50	

Form C



D1h11	d2	d3	l1	l2+0.5/-0	e	R1	R2
13		10	18	8			
16		12	20	9,5			
20		15	22	11,5			

Form D

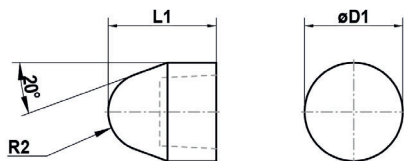


D1h11	d2	d3	l1	l2+0.5/-0	e	R1	R2
13	5	10	18	8	3	32	
16	6	12	20	9,5	4	40	
20	8	15	22	11,5	5	50	

ELEKTRODENKAPPEN

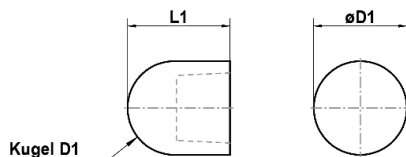
Elektrodenkappen nach ISO 5821

Form E



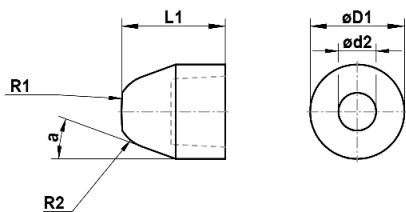
D1h11	d2	d3	l1	l2+0.5/-0	e	R1	R2
13		10	18	8			5
16		12	20	9,5			6
20		15	22	11,5			8

Form F



D1h11	d2	d3	l1	l2+0.5/-0	e	R1	R2
13		10	18	8			
16		12	20	9,5			
20		15	22	11,5			

Form G

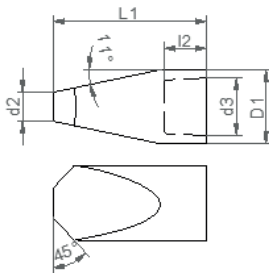


D1h11	d2	d3	l1	l2+0.5/-0	e	R1	R2
13	5	10	18	8		32	5
16	6	12	20	9,5		40	6
20	8	15	22	11,5		50	8

ELEKTRODENKAPPEN

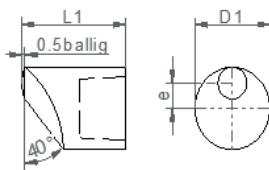
SVS-Bauform

K12,5-010



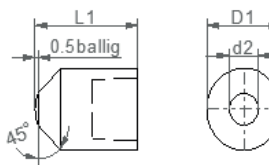
D1h11	d2	d3	l1	l2+0.5/-0	e
13	5	10	29	8	

K12,5-019



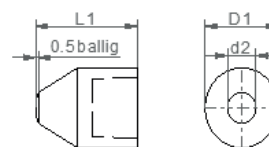
D1h11	d2	d3	l1	l2+0.5/-0	e
13	5	10	18	8	4

K12,5-020



D1h11	d2	d3	l1	l2+0.5/-0	e
13	5	10	18	8	

K12,5-029

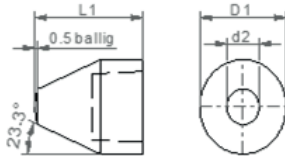


D1h11	d2	d3	l1	l2+0.5/-0	e
13	4	10	18	8	

ELEKTRODENKAPPEN

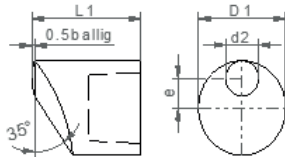
SVS-Bauform

K16-005



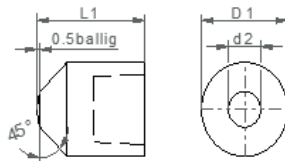
D1h11	d2	d3	l1	l2+0.5/-0	e
16	6	12	20	9,5	

K16-013



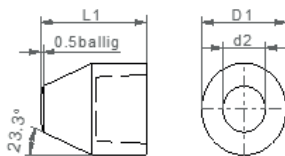
D1h11	d2	d3	l1	l2+0.5/-0	e
16	6	12	20	9,5	5

K16-017



D1h11	d2	d3	l1	l2+0.5/-0	e
16	6	12	20	9,5	

K16-030



D1h11	d2	d3	l1	l2+0.5/-0	e
16	8	12	20	9,5	