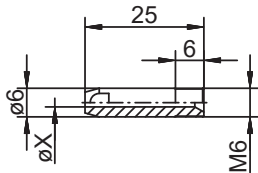
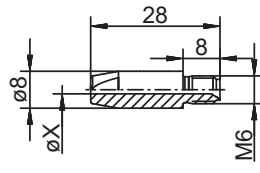


CONTACT TIPS

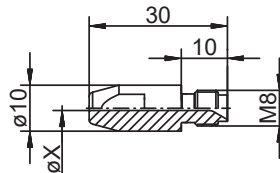
S-147 $\varnothing 6$ /M6x25



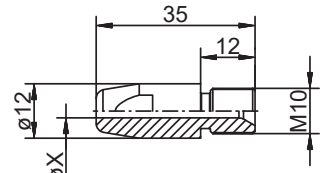
S-238 $\varnothing 8$ /M6x28



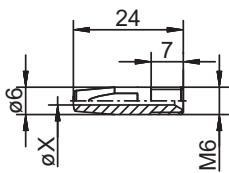
S-140 $\varnothing 10$ /M8x30



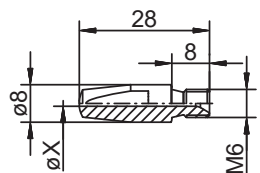
S-3849 $\varnothing 12$ /M10x35



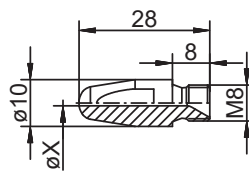
S-1129 $\varnothing 6$ /M6x24



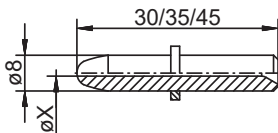
S-716 $\varnothing 8$ /M6x28



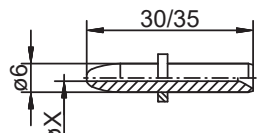
S-1597 $\varnothing 10$ /M8x28



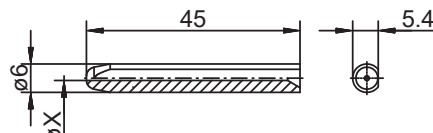
S-1743 mit oder ohne Ring



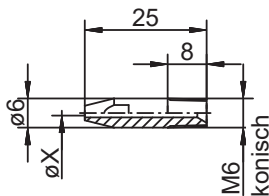
S-3059 mit oder ohne Ring



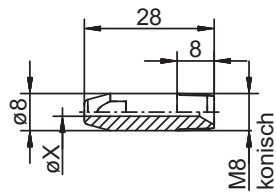
S-3086 für Doppeldraht



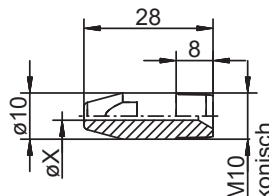
S-1110 $\varnothing 6$ /M6 konisch x25



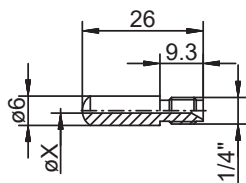
S-1542 $\varnothing 8$ /M8 konisch x28



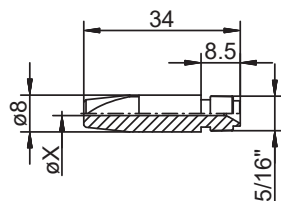
S-1111 $\varnothing 10$ /M10 konisch x28



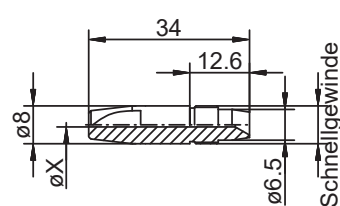
S-4029 $\varnothing 6$ /1/4"x26



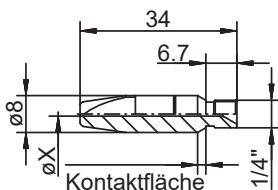
S-3604 $\varnothing 8$ /5/16"x34



S-3866 $\varnothing 8$ /Schnellgewinde x34



S-4064 $\varnothing 8$ /1/4"x34



S-3773 $\varnothing 8/\varnothing 9$ x41/35

